

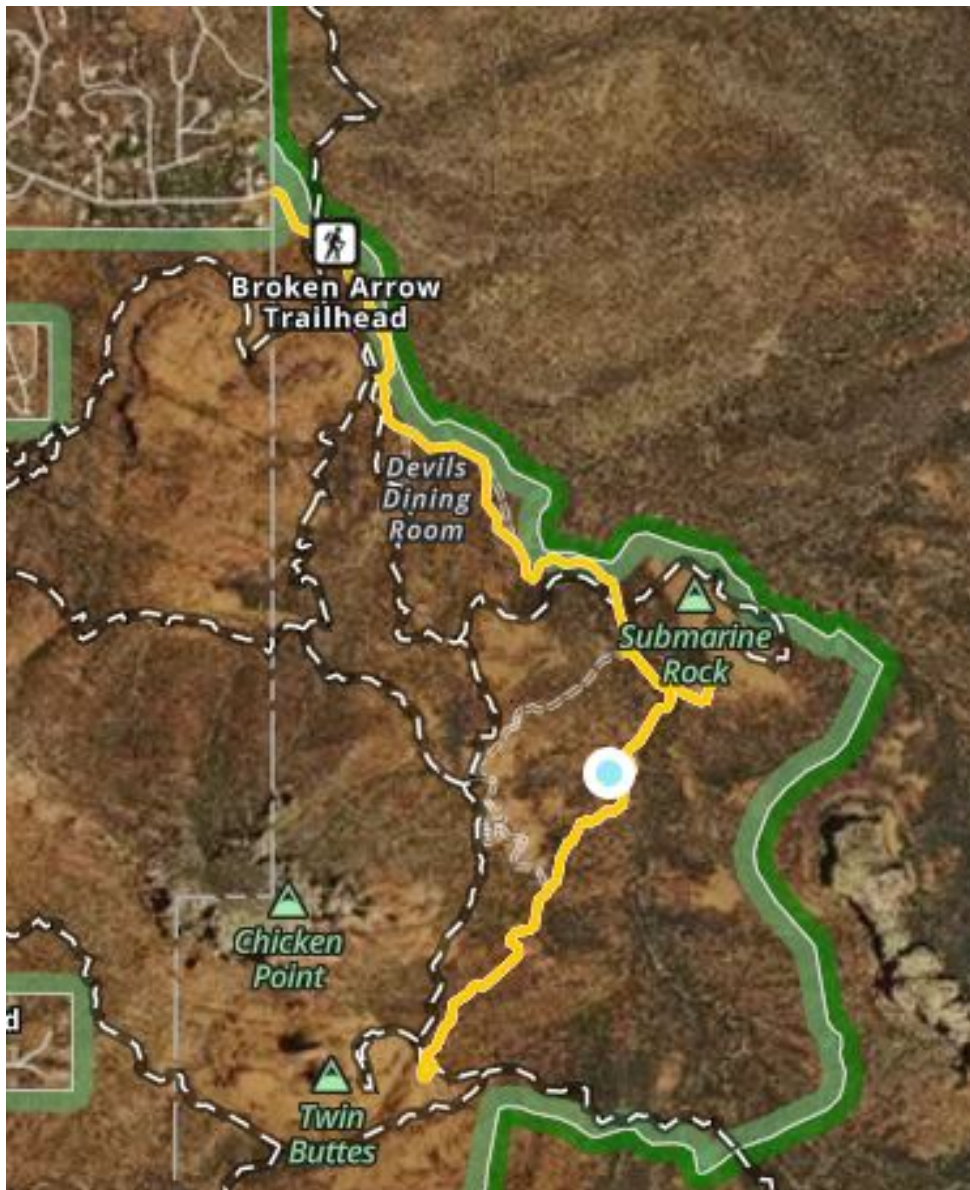


Broken Bow Trail NS

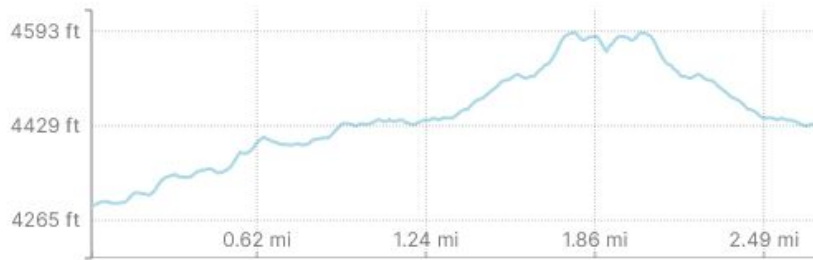
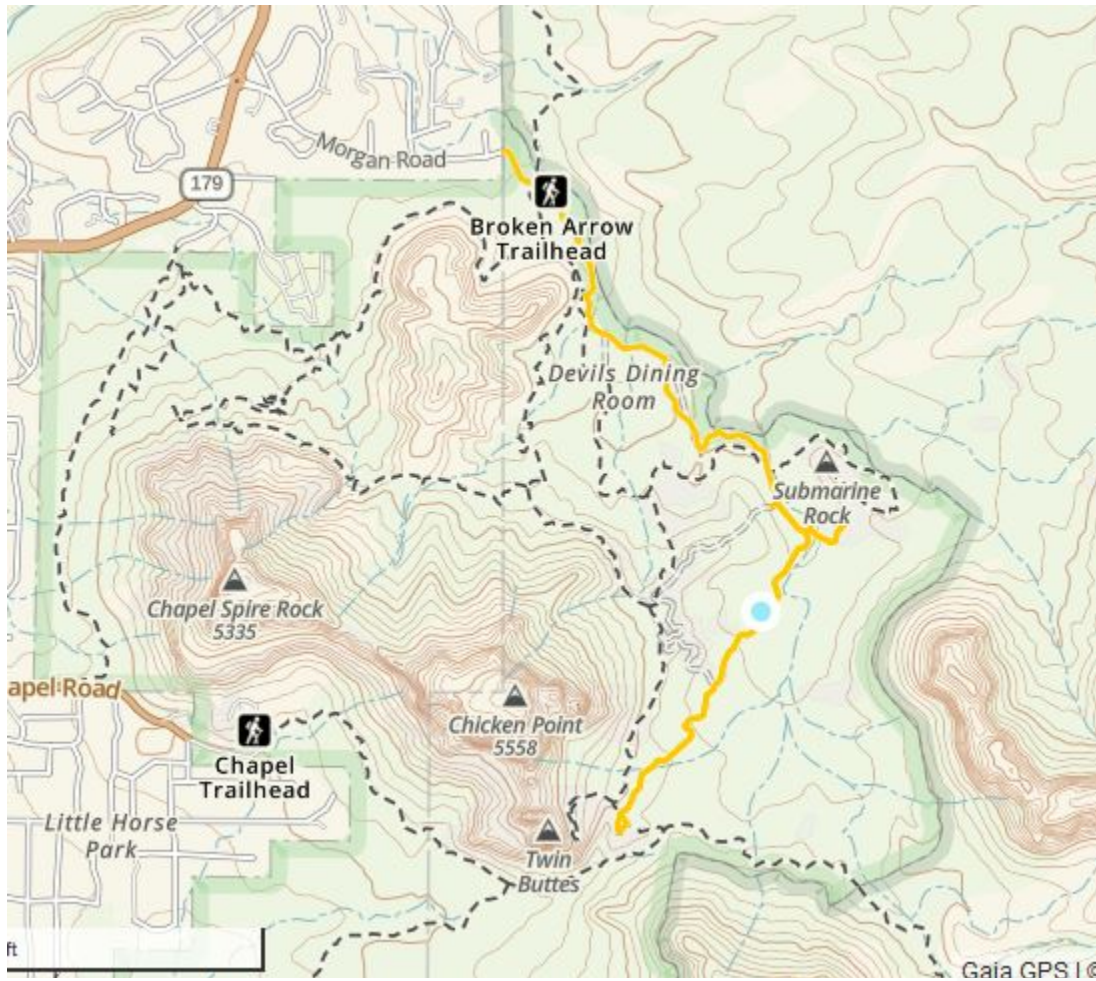
This information is not to be used for navigation. Information contained herein is provided as a courtesy and is meant to be used as a starting point in comparing trails and planning an adventure. You and you alone can ensure a safe adventure by developing skills, building redundancy into your planning along with contingences for ever changing trail and weather conditions. Maps can be printed and given to an emergency contact so loved ones will know where to begin their search if you do not return. You should always be prepared, check with the local agency having jurisdiction and travel with experienced people.

State:	Arizona
County:	Coconino
Area:	Sedona
Trail Name:	Broken Bow Trail NS
Trail also known as:	
Trailhead Latitude:	345046N
Trailhead Longitude:	1114517W
Season:	May - October
Scenic Rating:	7
Technical Rating:	2
Distance miles:	8.4 Point to Point
Travel Time hours:	1
Area miles:	2.7
Elevation start of trail:	4,289 ft.
Elevation end of trail:	4,433 ft.
Maximum Elevation:	4,588 ft.
Grade :	
Accent:	357 ft.
Decent:	204 ft.

The information above was compiled by using GPS aided maps and actual driving experiences.



State:	Arizona
County:	Coconino
Area:	Sedona
Trail Name:	Broken Bow Trail NS
Trail also known as:	
Trailhead Latitude:	345046N
Trailhead Longitude:	1114517W



Elevation

X-Axis:

Distance

Hover over the graph to find the corresponding location on the map.